



Board of Education's Ad Hoc Committee on Student Assignment

August 8, 2011

1



Overview

- **Elementary Attendance Areas**
- **2012-13 Enrollment Cycle**
- **Future Meetings**

2



First Annual Review

- 1. Compare baseline (data used for development process) with 2011-12 school year data**
- 2. Review suggestions from community**

5



Guiding Questions

- 1. Help balance the size and diversity of each attendance area?**
 - Impact on number of K5 residents in each attendance area?
 - Impact on racial/ethnic, academic, and linguistic diversity of each attendance area?
- 2. Avoid topographical barriers (e.g., high traffic streets)?**
- 3. Same logic be applied to all suggestions?**

6



Challenge: Data not Available

- **Applicant data dynamic until school starts**
- **Enrollment data not available until October**
- **Significant differences between applicant pool and enrollment**
- **Need consistent comparisons**

7



Recommendations

- **Use same attendance areas for 2012-13 school year**
 - Review boundaries once 2011-12 school year data available
 - Incorporate findings into Annual Report due January 2012
- **Share suggestions submitted by community**

8



Suggestions from Community

- 1. Alvarado (Glen Park)**
Move boundary south from 29th to 30th street
- 2. Alvarado (Milk)**
Move boundary north nearer crest of hill
- 3. Grattan (McKinley)**
Move boundary east to include Upper Haight
- 4. Sloat (Miraloma)**
Move boundary north to include St. Francis Wood
- 5. Sunnyside (Miraloma)**
Move boundary north to include Sunnyside Playground and Sunnyside Conservatory
- 6. Parks (Sherman)**
Move boundary north of Geary Boulevard

9



1. Alvarado (Glen Park)



10



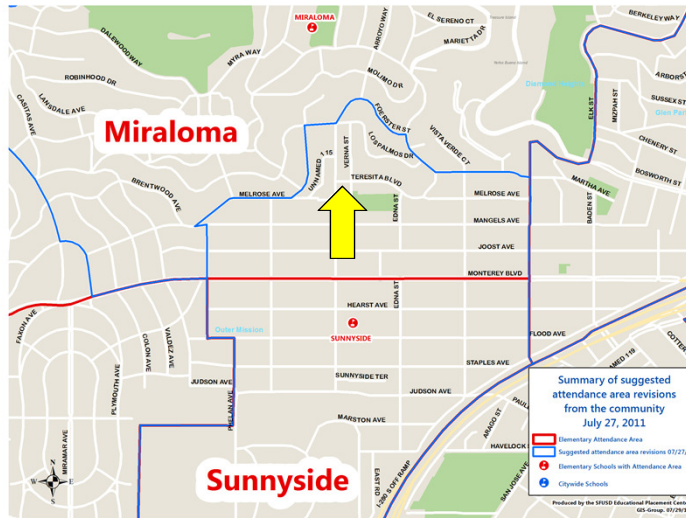
4. Sloat (Miraloma)



13



5. Sunnyside (Miraloma)



14



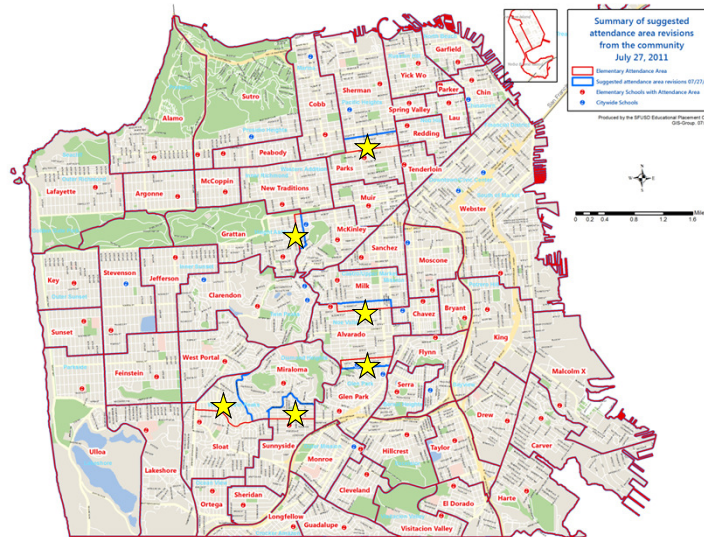
6. Parks (Sherman)



15



★ All Suggestions from Community



16



Next Steps

- Use same attendance areas for 2012-13 school year
- Review attendance area boundaries once 2011-12 school year data available
- Incorporate findings into Annual Report due January 2012
- Update web page and email community members

19



2012-13 Enrollment Cycle

20



2012-2013 Key Dates

- **October – School tours begin**
- **November 5 – School Enrollment Fair**
- **November 30 – Middle School Night**
- **December 16, 2011 - Lowell Applications**
- **January 27, 2012 – Applications due**
- **March 23, 2012 – Notification letters for March Placement Period**
- **April 2-13 – Register at Schools**

21



Changes for 2012-2013

- **Under California law, the eligibility age for enrollment into Kindergarten has been changed from December 2 to November 1**
- **Students must be five years old on or before November 1, 2012 to be eligible for Kindergarten**



Transitional K Program

- **Students that are born between November 2 and December 1 are eligible for a Transitional Kindergarten (TK) program for 2012-2013**
- **Parents of these students who submit an enrollment application must agree to a 2-year program where the student will be enrolled in TK for 2012-13 and will continue into Kindergarten for the 2013-14 school year**



Transitional K Program

- **The application and placement process for the TK program will be identical to the process for Kindergarten**
- **Families may apply for TK at any school which offers a Kindergarten program and the same assignment process will apply**
- **The EED is working on an implementation plan for the Transitional Kindergarten Program**



2012-13 Application Form: Survey Q

Place 1, 2, 3 beside the three most important factors you considered when choosing schools for your child

After school program at the school	Diversity of students	Neighborhood safety	Near home
School hours	Attend school with sibling	Language pathway	Near childcare
Near work	School's academic reputation	School bus transportation	Special Ed services
Teachers and principal	Parent community	Recommended by family/friends	Other



Future Ad Hoc Committee Meetings



Future Meetings

- **November 14, 2011**
 - Structure for first annual report (monitoring)